



MOTOCARMA

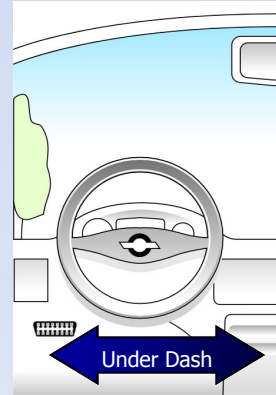
QUICKSTART GUIDE for Android Phones

INSTALL SOFTWARE

1. Download MotoCarma from the Android Market
2. Start the application
3. Activate the Software
 - Enter the registration key provided from Motolingo and press *Register*

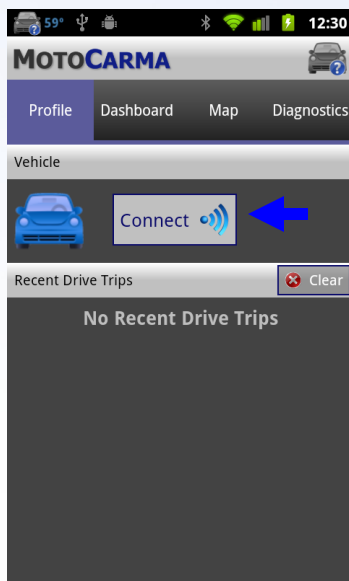
INSTALL HARDWARE

4. Plug device into diagnostic port

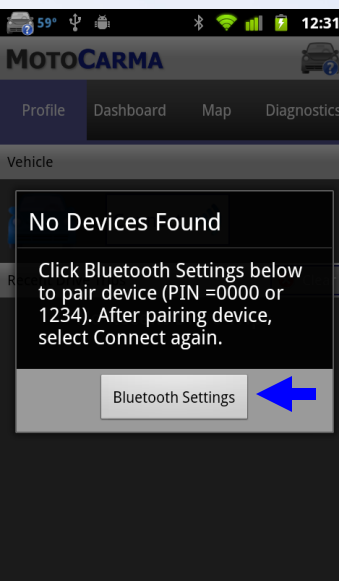


CONNECT

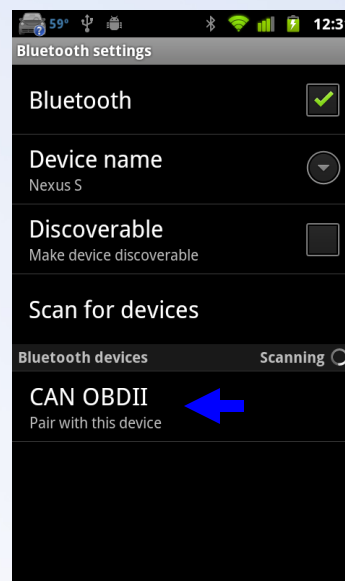
5. Under *Profile*, Select *Connect*



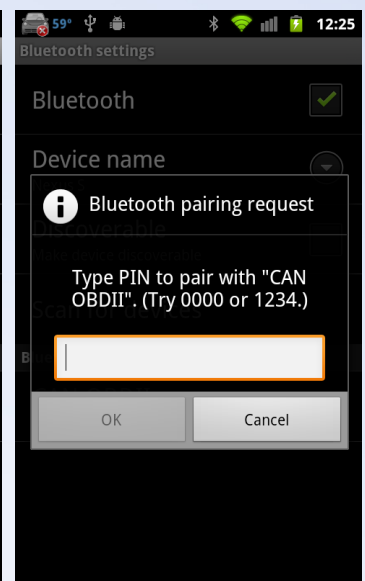
6. Select *Bluetooth Settings*



7. Pair with *CAN OB-DII*



8. Enter 0000 and press *OK*



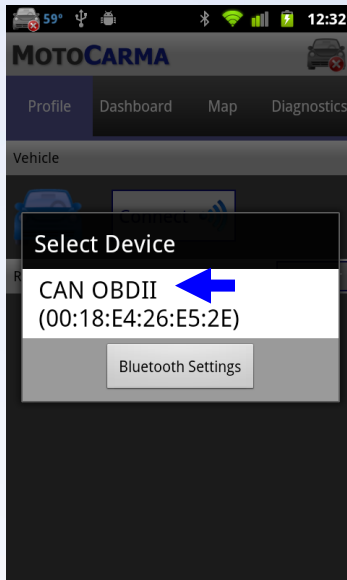
www.motolingo.com
support@motolingo.com
866-927-6885

Brilliant Solutions
for Smartphones

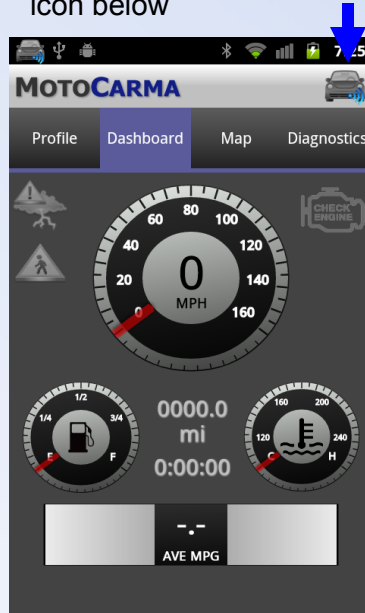


CONNECT

9. Go back to the Moto-Carma app and select *Connect* again. Select *CAN OBDII*.



10. Go to *Dashboard* and turn ignition key on. The app will attempt to connect every 30 seconds as shown by the icon below



11. The green check on the Notification icon indicates the vehicle is connected.



System Requirements

Vehicles:

All OBDII compliant passenger cars and light-duty trucks.
1996 and newer in US.

Operating System:

Android 2.0 and higher

Phone:

Built in GPS (optional) ; *Bluetooth*® v1.2 and higher

Diagnostic Device:

Bluetooth® capable. Device from Motolingo required.

Diagnostic Device

Range:

Approximately 32 feet (10 m)

Dimensions:

2.44 x 1.77 x 0.87 inches (62x45x22 mm)

Power Supply:

8-32 V from Vehicle Battery (through diagnostic port)

About Motolingo

Motolingo develops solutions that manage the mobile world – from your smartphone. Rather than a phone with features, Motolingo believes the smartphone can be an extension of your senses and creates applications that collect and process data from the world at your virtual fingertips to enable powerful business communication and a safer, more efficient life-style.

Motolingo® is a trademark of Motolingo, Inc.



www.motolingo.com
support@motolingo.com
866-927-6885

Brilliant Solutions
for Smartphones